

Semi-Dry Blotter



Fast blotting device for agarose and protein gel, unique Bi-directional force* design use eight pieces springs to get most even force during the blotting. Stainless steel plates as cathode, platinum plated titanium plates as anode. Supplied with high current ELITE 200 power supply for stable electric field. Capable to apply single layer four side-by-side mini gels, maximum up to 18 x 20cm gel, or transfer up to three stacking layers polyacrylamide gels. It's time saving for single or multiple blotting.

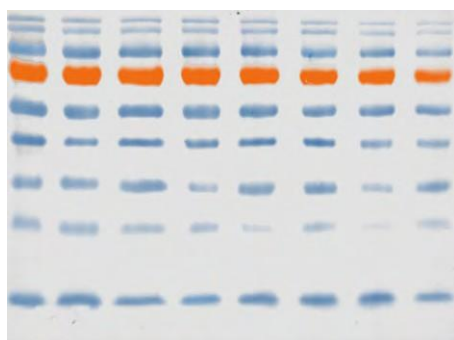
Four push lock and Bi-directional electrode plates provide even force between two electrode plates. This device extremely simple, easy assemble, apply proper buffer and ELITE power supply will get excellent result within ten minutes.



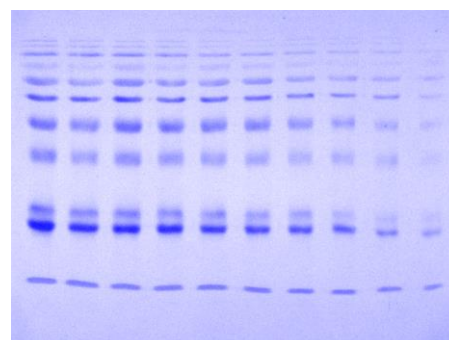
Four of 7 x 10cm gel-membrane sandwiches



Simple and quick push lock



Prestained marker transfer to PVDF



Protein marker transfer to PVDF

Features

- Reliable low cost semi-dry apparatus in the market
- Fast western blotting protocol less than 7 minutes
- Easy to clean and assemble device in the market
- Less than one hour transferring time
- Long life anti-corrosive electrode

Applications

- Education, university, academic, research institute
- Analytical chemistry, molecular laboratory
- Food industrial and inspection laboratory
- Drug discovery, Biotechnology company
- Proteomics, genomics core facility
- Enzyme reaction, immunology

Specifications

| | |
|---------------------------------|--|
| Gel size | Max. 4 pieces 100 x 80mm |
| Electrode size | 205 x 205mm with 1mm thickness |
| Transfer area | 180 x 200mm |
| Anode | Platinum plated on titanium plate |
| Cathode | 316 stainless steel plate |
| Minimum transfer time | 7 minutes |
| Force apply | Simultaneously up & down force by 8 springs* |
| Cable | High efficiency black & red cable |
| Physical dimensions | 225 x 225 x 85mm (WxDxH) |
| Weight | 1.2kg |
| Operating environment | Temp: 0 - 40°C, Humidity: 10 - 90% R.H. Non-condensing |
| Certification | CE |
| Recommended power supply | ELITE HC 2.5 / ELITE HC 3.0 / ELITE 600U |

*Bi-directional force is the patent of Wealtec Bioscience. Patent No.:217120 / 2001-001686 / US 6,592,734 B2
The spec is subject to change without prior notice.

Ordering Information

| Catalog No. | Description |
|--------------------|--|
| 1073012 | Yrdimes, Semi-dry transfer system includes ELITE HC 2.5 Power Supply |
| 1073013 | Yrdimes, Semi-dry transfer system includes ELITE HC 3.0 Power Supply |
| 1073003 | Yrdimes, Semi-dry transfer unit |
| 1001023 | ELITE HC 2.5 Power Supply, 2-250V 10mA-2500mA, 100-240V, 50/60 Hz |
| 1001024 | ELITE HC 3.0 Power Supply, 2-300V 0.01A-3.0A, 100-240V, 50/60 Hz |
| 1011031 | ELITE 600U Power Supply, 5-600V, 1-750mA, 120-240V, 50/60 Hz |
| Accessories | |
| 1012407 | A pair of electrode adaptors (red one and black one) -- US type |
| 1012410 | A pair of electrode adaptors (red one and black one) -- UK type |



Wealtec Corp.
1885 Meadowvale Way,
Sparks, NV 89431, USA
Tel: +1-775-351-2066 Fax: +1-775-351-2077

E-Mail: sales@wealtec.com Web-site: <http://www.wealtec.com>

Wealtec Bioscience Co., Ltd.
27F., No.29-1, Sec. 2, Zhongzheng E. Rd., Danshui Dist.,
New Taipei City 251, Taiwan
Tel: +886-2-8809-8587 Fax: +886-2-8809-8589



No. 1208SDY01©2014Wealtec Corp.