

KETA

CLX



Features

Robust Build : built with metal outer shell and anti-corrosive painting darkroom.

Compact Design: packed with a Peltier cooled camera, SBC, 12" touchscreen and darkroom in a small footprint.

Dedicated Chemiluminescence System: capture only chemiluminescent membranes but delivery uncompromised results.

Picogram Dynamic Range Sensitivity: detect protein samples at picogram level with Auto Quant Capture mode.

Manually Adjust Lens: slightly adjust the lens to capture different membrane sizes, from midi to strip size.

Two Sample Tray Level: adjust the lens to get the best field of view.

Image Blending: combine colored marker images with chemiluminescent sample images to verify the size of protein sample.

Easy Auto Capture Mode: automatically capture both qualitative and quantitative images.

Seamless Workflow: capture, compare, enhance, and analyze images on one imaging software, Magic Chemi.



Simple and Robust but Sensitive Design

The KETA CLX systems consist of build in SBC, 12" touchscreen displays, tightly sealed darkrooms, deeply cooled cameras, and the powerful imaging software, Magic Chemi. The simple, dedicated design of the KETA CLX systems provide a robust quality specialized to routinely capture reproducible Western blotting images. The build-in SBC allows users to import and export their image data through the USB ports with no hassle and to connect to an external display. The 12" touchscreen display along with the imaging software, Magic Chemi, provides a user-friendly environment which allows inexperienced users to capture images in just a few clicks. The tightly sealed darkroom and deeply cooled camera, which integrates Peltier cooling design, allow users to capture high noise-to-signal images with low backgrounds.

Affordable but Uncompromised Performance

The KETA CLX systems are the ideal choices for capturing high quality Western blot images. The dedicated design is crafted to routinely capture chemiluminescent images and provides users consistent, reproducible results. The large size camera chip and 16-bit camera depth output guarantee users to capture images with a wide dynamic range and low backgrounds, that is the ability to detect proteins at picogram range on a chemiluminescent membrane.

Fast and Easy but Smooth Workflow



From capturing an image to generating a quantification report, the KETA CLX systems provide a simple and smooth data acquisition experience to users. After a system is taken out of box, only a few camera focus and iris adjustments are all users need to perform to consistently capture excellence chemiluminescent images. The user-friendly software interface design and a variety of imaging capture modes of Magic Chemi allow users to capture images suited to their needs. As soon as users have acquired their images, they can easily compare their images with previous images, enhance the images with the editing tools, and select the best images for quantification analysis. Not only does Magic Chemi provide a dedicated image capturing experience, but it gives users freedom to enhance the images and analyze the densitometry data of the images right away. Wi-Fi wireless connection function is available.

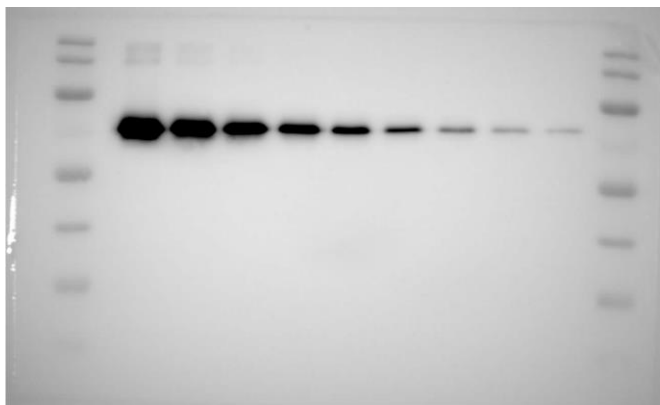
- Dark Room



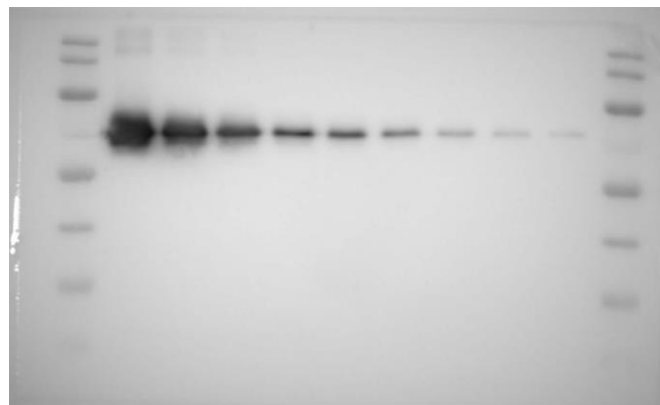
Applications



- Easy Auto Capture Mode: One-click for Qualitative and Quantitative Images



Qualitative Images

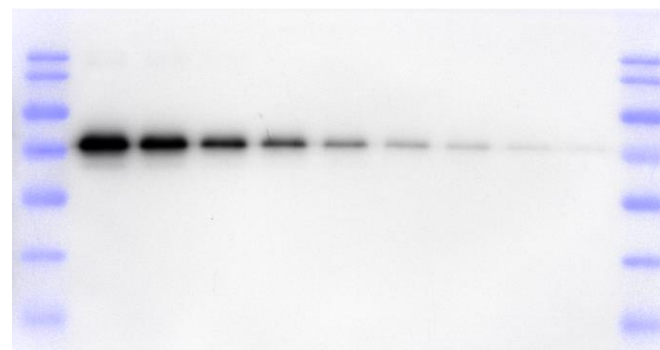


Quantitative Images

- Image Blending of Colored Marker and Chemiluminescent Sample Images

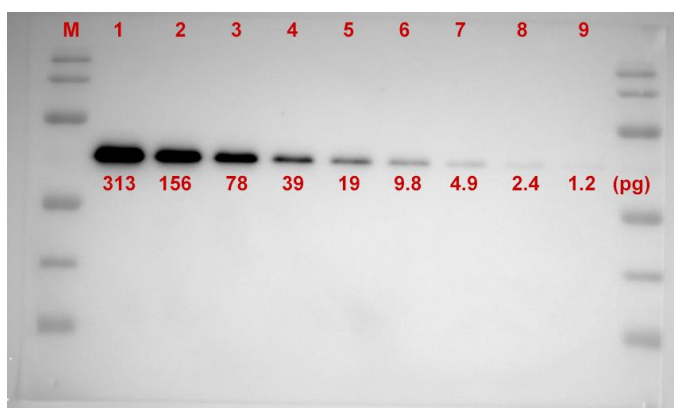


Sample



Combine

- Chemiluminescence Detection of Transferrin at Picogram Level



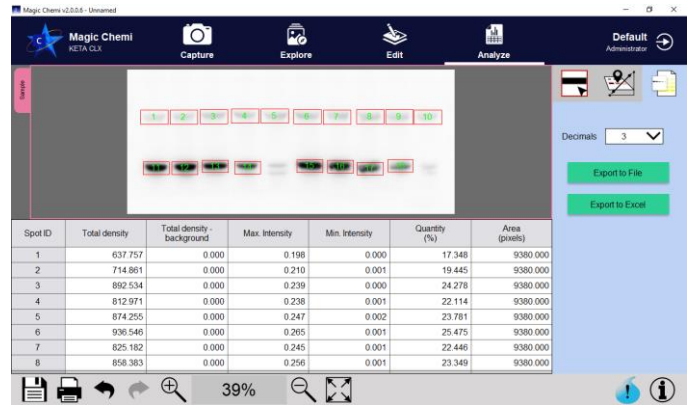
Immunoblotting:

detect, identify, and quantify proteins with chemiluminescence detection and the imaging software, Magic Chemi.

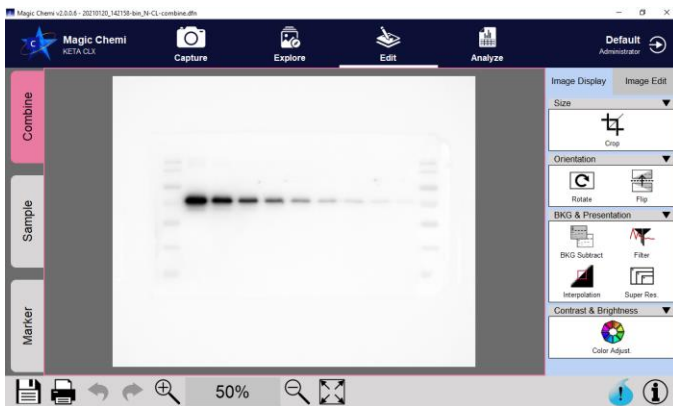
- Seamless Workflow Powered by Magic Chemi



Capture



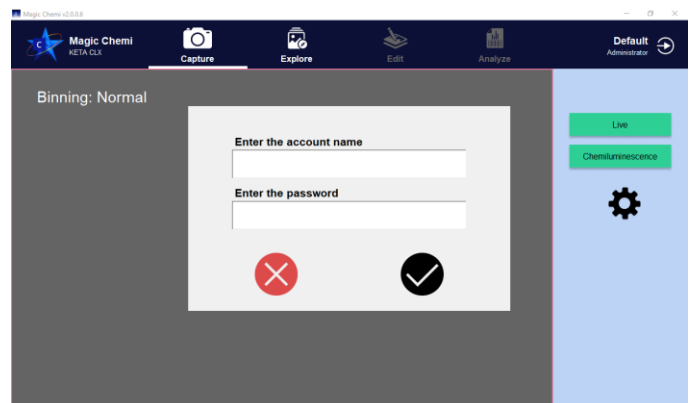
Analyze



Edit



Image Compare



User Login

Model	KETA C	KETA CLX
Camera depth	16bit	
Dynamic Range	>4.0	
Operation temperature	0-60°C	
Chip size	1"	
Resolution	6.0M pixels	
Pixel Size	2.4um x 2.4um	
Cooling	Peltier	
Lens	F0.95 / 25mm	
Internal light source	LED White	
Magic Chemi software	Basic	Standard
OS system	MS Windows 10	
Physical dimensions	400 x 330 x 580mm (WxDxH)	
Weight	19kg	
Power	100 – 240V, 50 – 60Hz	
Wi-Fi	N/A	Yes
Optional		
External Touch Screen	20" LCD Screen with touch panel	
Thermal printer	Digital	

The specification is subject to change without prior notice.

Ordering Information



Catalog No.	Description
1150078	KETA C the dedicate chemiluminescence system complete include in-build SBC,12" touch panel LCD, high sensitivity 6.0M pixels Peltier cooled camera, f0.95 manual adjust lens as standard, two level sample stage, dual white light LED, Magic Chemi Basic single key user software package, and a set of keyboard and mouse. 100 - 240V, 50 - 60Hz.
1150080	KETA CLX the dedicate chemiluminescence system complete include in-build SBC,12" touch panel LCD, high sensitivity 6.0M pixels Peltier cooled camera, f0.95 manual adjust lens as standard, two level sample stage, dual white light LED, Magic Chemi single user key software package, a set of keyboard and mouse, 100 - 240V, 50 - 60Hz.
1153006	Magic Chemi Software, three user keys
1153021	Magic Chemi Basic upgrade to Magic Chemi Standard software package
1155031	Addition key board and mouse
1155032	20" LCD with touch panel
Accessories	
1146003	Digital thermal printer
1147007	Thermal paper 5 rolls/pack

Wealtec Corp.
1885 Meadowvale Way,
Sparks, NV 89431, USA
Tel: +1-775-351-2066 Fax: +1-775-351-2077
E-Mail: sales@wealtec.com

Wealtec Bioscience Co., Ltd.
27F., No.29-1, Sec. 2, Zhongzheng E. Rd.,
Danshui Dist., New Taipei City 251, Taiwan
Tel: +886-2-8809-8587 Fax: +886-2-8809-8589
Web-site: <http://www.wealtec.com>

